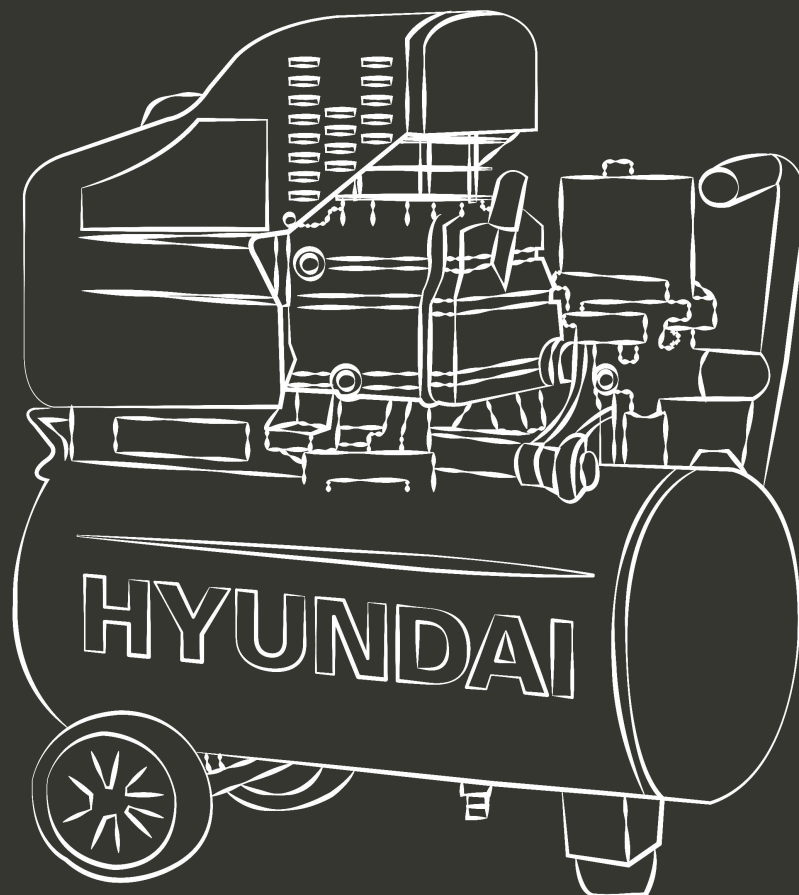


HYUNDAI
POWER PRODUCTS

AIR COMPRESSOR

H50CV-A

ORIGINAL INSTRUCTIONS



IMPORTANT NOTICE

THINGS TO DO BEFORE OPERATING YOUR NEW COMPRESSOR FOR THE FIRST TIME

1. On the top front of the compressor you will find a white plastic shipping plug inserted into the oil filler hole, Remove the shipping plug and replace by pressing the red oil filler plug(Supplied in the parts bag) into the oil filler hole.
2. Also, supplied in the parts bag you will find a black air breather assembly.Screw the assembly into the hole on the side and at the top of the compressor head.
3. Using the sight-glass built into the lower front area of the compressor (just behind the regulator), check the oil level. It should be at the halfway mark on the sight-glass for normal operation, If it is necessary to add oil,please use any standard air compressor oil available at home centers and other major retailers.
4. There are two air outlet fittings on the regulator.
Air flow for one fitting is operated by turning the regulator handle. The other is a free flow directly from the tank.Screw either a metal cap or a quick-coupler (not supplied) onto the free-flowing fitting before starting the compressor.Use nylon thread-seal tape when working with air fittings to prevent leakage.

CONTENTS

1. INTRODUCTION.....	4
2. SAFETY GUIDELINES.....	4
3. BRIEF DESCRIPTION.....	6
4. GENERAL VIEW AND MAIN COMPONENTS.....	6
5. MAIN TECHNICAL PARAMETER.....	6
6. PREPARATION FOR STARTING.....	7
7. OPERATION AND ADJUSTMENT.....	7
8. CAUTIONS.....	8
9. MAINTENANCE.....	9
10. TROUBLES AND REMEDIES.....	10
11. PARTS ILLUSTRATION	11
PARTS LIST.....	12
12. LIST OF GOODS.....	13
13. DECLARATION OF CONFORMITY.....	14
14. W A R R A N T Y.....	15
15. P R O D U C T F A I L U R E.....	16
16. W A R R A N T Y E X C L U S I O N S.....	17

1. INTRODUCTION

Read this manual carefully before operating or servicing this, air compressor to familiarize with proper safety, operating, and maintenance procedures. Failure to comply with instructions in this manual could result in personal injury, property damage, and voiding of your warranty. Following the instructions in this manual will provide a longer and safer service life for your air compressor.

2. SAFETY GUIDELINES



DANGER- AN IMMEDIATE HAZARD THAT WILL CAUSE SERIOUS INJURY OR LOSS OF LIFE.



1. TO REDUCE THE RISK OF FIRE OR EXPLOSION, NEVER SPRAY FLAMMABLE LIQUIDS IN A CONFINED AREA. It is normal for the motor and pressure switch to produce sparks while operating. If sparks come into contact with vapors from gasoline or other solvents, they may ignite causing fire or explosion. Always operate the compressor in a well-ventilated area. Do not smoke while spraying. Do not spray where sparks or flame are present. Keep compressor as far from spray area as possible.



2. The solvents Trichloroethane and Methylene Chloride can chemically react with aluminum used in paint spray guns, paint pumps, etc. and cause an explosion. If you are using these solvents, use only stainless steel spray equipment. This does not affect your air compressor, but many affect the equipment being used.



3. Never directly inhale the compressed air produced by a compressor. It is not suitable for breathing purposes.



WARNING: A POTENTIAL HAZARD THAT COULD CAUSE SERIOUS INJURY OR LOSS OF LIFE

1. Do not weld on the air tank of this compressor. Welding on the air compressor tank strength and cause an extremely hazardous condition. Welding on the tank in any manner will void the warranty.



2. Never use an electric air compressor outdoors when it is raining or on a wet surface, as it may cause an electric shock.

3. This unit starts automatically. ALWAYS shut off the compressor, remove the plug from the outlet, and bleed all pressure from the system before servicing the compressor, and when the compressor is not in use.

4. Check the manufacturer's maximum pressure rating for air tools and accessories. Compressor outlet pressure must be regulated so as to never exceed the maximum pressure rating of the tool.



5. High temperatures and moving parts are present under the shield. To prevent burns or other injuries, DO NOT operate with the shield removed. Allow the compressor parts to cool before handling or servicing.



6. Be certain to read all labels when you are spraying paints or toxic materials, and follow the safety instructions. Use a respirator mask if there is a chance of inhaling anything you are spraying. Read all instructions and be sure that your respirator mask will protect you.



7. Always wear safety goggles or glasses when using an air compressor. Never point any nozzle or sprayer toward a person or any part of the body.

8. Do not adjust the pressure switch or regulating valve for any reason. Doing so voids all warranties. They have been pre-set at the factory for the maximum pressure of this unit.



8. Read the operating instructions



9. Risk of electric shock



10. Do not open the valve before connecting the air hose.



11. Risk of high temperature



CAUTION: A POTENTIAL HAZARD THAT MAY CAUSE MODERATE INJURY OR DAMAGE TO EQUIPMENT.

1. Drain the moisture from the tank on a daily basis. A clean, dry tank will help prevent corrosion
2. Pull the pressure relief valve ring daily to ensure that the valve is functioning properly, and to clear of any possible Obstructions
3. To provide proper ventilation for cooling, the compressor must be kept a minimum of 31cm (12inches) from the nearest wall, in a well-ventilated area.
4. Fasten the compressor down securely if transporting is necessary. Pressure must be released from the tank before transporting..
5. Protect the air hose and electrical wire from damage and puncture. Inspect them weekly for weak or worn spots, and replace them if necessary..

WARNING!

DISCONNECT POWER AND RELEASE ALL PRESSURE FROM THE SYSTEM BEFORE ATTEMPTING TO INSTALL, SERVICE, RELOCATE OR PERFORM ANY MAINTENANCE.

1. Follow all local electrical and safety codes as well as National Electrical Codes(NEC) and Occupational Safety and Health Act(OSHA). .

2. Electric motors and starters must be securely and adequately grounded using a three-pronged Outlet.

CAUTION!

Never use an extension cord with this product.

Use additional air hose instead of an extension cord to avoid power loss and permanent motor damage. Use of an extension cord voids the warranty.

Record the Model NO., Serial No. and Date of Purchase in the space below.

Model No _____

Serial No _____

Date of Purchase _____

Retain these numbers for future reference

3. BRIEF DESCRIPTION

This micro air compressor is of novel design and excellent workmanship. Having the advantages of compact construction, fine appearance, light weight, easy operation, high safety and low noise, it can be widely used in machinery, chemical industry, spray and decoration, automatic control system and other fields where compressed air is required.

4. GENERAL VIEW AND MAIN COMPONENTS(Fig.1)

- (1) Main compressor
- (2) Pressure switch
- (3) Outlet Valve
- (4) Regulating Valve
- (5) Pressure gauge
- (6) Check Valve
- (7) Drain cock
- (8) Wheel
- (9) Discharge pipe
- (10) Air tank
- (11) Fan cover



Fig.1

5. MAIN TECHNICAL PARAMETER

Model	H50CV-A
Power	3HP
Voltage	220V
Frequency	60HZ
Current	7.5A
Rated Speed	3400tr/min
Displacement	250L/min
Max.Working Pressure	0.8Mpa
Tank Capacity	50L
Net weight	26kgs
L*W*H(cm)	70*31*66

6. PREPARATION FOR STARTING

- (1)The place to set the compressor should be clean,dry and ventilated.
- (2)Keep the use voltage within $\pm 5\%$ of rated.
- (3)Keep the oil level in the red circle leveler.
- (4)Recommend compressor oil use SAE30 or L-DAB 100 over 10°C,and use SAE10 or L-DAB68 below 10°C.
- (5)Open the outlet valve,set the knob of pressure switch in position on (Fig.2),let the compressor run 10 minutes without load to ensure lubricating the moving parts before regular service.

7. OPERATION AND ADJUSTMENT

- (1)Open the drain cock under the tank first and then close it.
- (2)The compressor is controlled by pressure switch when normal working.It can be stoped automatically as pressure increasing to the maximum and restart as pressure decreasing to the minimum.The rated pressure has been adjusted when produced.Don't change it carelessly.As soon as motor switched off the compressed air in the discharge pipe should be released through the outlet valve under the switch.This is the necessary condition for restart,or the motor will be damaged.The rated pressure can be adjusted by turning the adjusting bolt of the switch(Fig.2).
- (3) The outlet pressure of compressed air can be adjusted by regulating valve.(Fig.2). Pull up the knob of regulation valve and turn it clockwise to increase the pressure.
- (4) When the compressor needs to be stopped as it is running, only to set the knob of pressure switch in position off

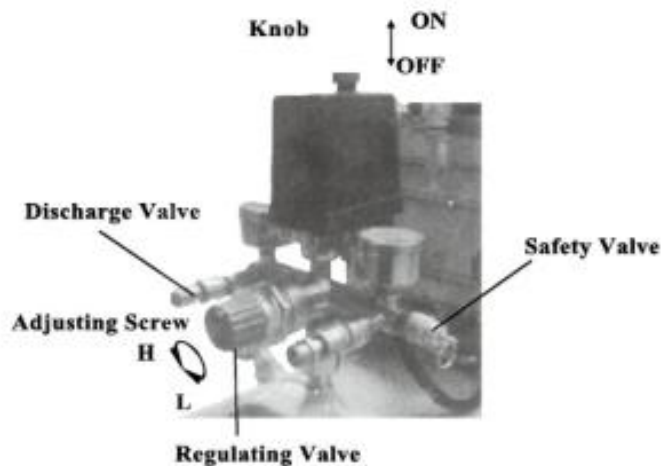


Fig.2

8. CAUTIONS

- 1) Put the cover off first and put on the breath pipe and air filter before running the compressor(Fig.3)
- 2) Never unscrew any connecting part when the tank is in pressure condition.
- 3) Never disassemble any electrical part before disconnecting the plug.
- 4) Never adjust the safety valve carelessly.

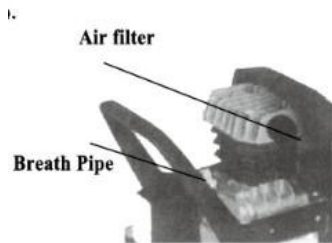


Fig.3

- 5) Never use the compressor when voltage is too low or too high.
- 6) Never use electrical wire more than 5m long with less than the section shown in Table 1
- 7) Never disconnect the plug to stop compressor, set the switch knob in position off instead
- 8) If the outlet valve doesn't work as motor stopped, search for the cause immediately so as not to damage the motor
- 9) Lubricating oil must be clean, oil level should be kept in the red circle leveler also
- 10) Disconnect the plug to cut off power supply and open the outlet valve.

Table 1

Motor output (HP/kw)	220V/230V/240V Single-phase		100V/110V/127V Single-phase	
	Wire(mm ²)	Fuse(A)	Wire(mm ²)	Fuse(A)
1/0.75	1.5	16	2.0	20
1.5/1.1	1.5	16	2.5	20
2/1.5	1.5	16	2.5	20
2.5/2	2.0	20	2.5	20

9. MAINTENANCE

- (1) Clean crankcase and renew lubricating oil after the first 10 working hours.
- (2) Clean the oil level after every 20 working hours, and replenish it if necessary (Fig.4.)
- (3) Open drain cock under the tank to exhaust condensate after every 60 working hours.
- (4) Clean crankcase every 120 working hours and renew the oil, clean air filter, and check safety valve and pressure gauge



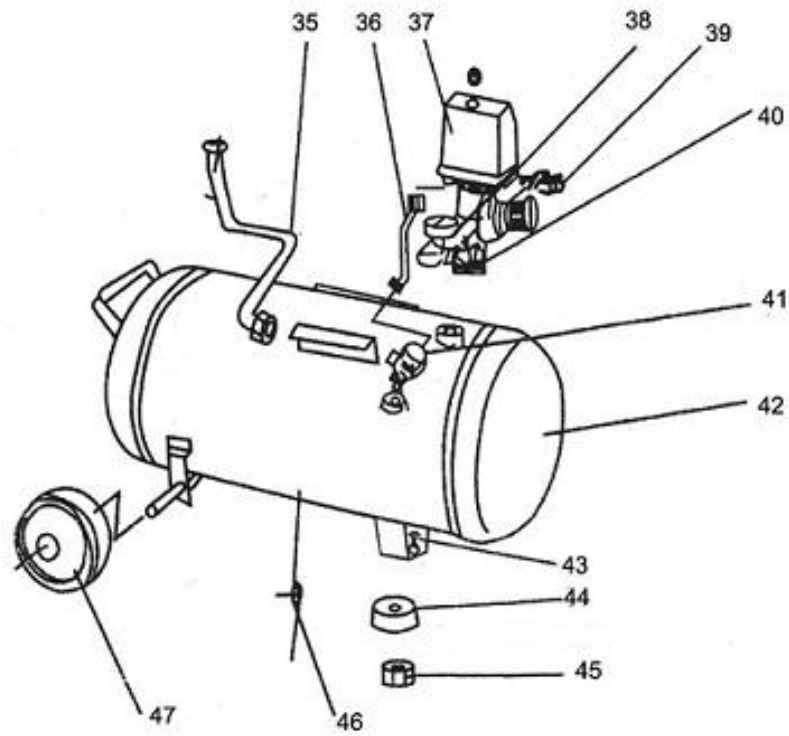
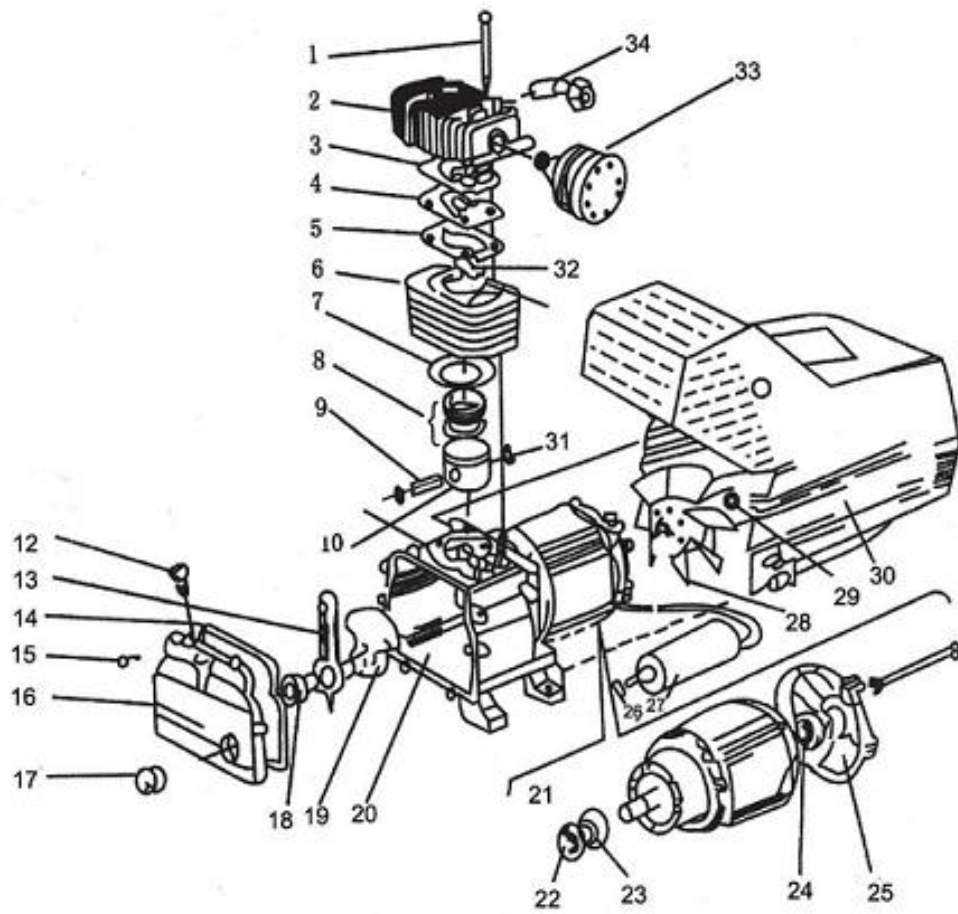
Fig.4

10. TROUBLES AND REMEDIES

Table 2

Trouble	Possible causes	Remedies
Motor unable running, Running too Slow, or Getting hot	(1) Fault in line, or voltage insufficient (2) Power wire is too thin or too long (3) Fault in pressure switch (4) Fault in motor (5) Sticking of main compressor	(1) Check the line (2) Replace the wire (3) Repair or replace (4) Repair or replace (5) Check and repair
Sticking of main compressor	(1) Moving parts burnt due to the oil insufficient (2) Moving parts damaged, or stuck by foreign body	Check crankcase, bearing, connecting rod, piston, piston ring, etc. and replace if necessary
Terrible shake Or abnormal noise	(1) Connecting part loosed (2) Foreign body got into main compressor (3) Piston knocking valve seat (4) Moving parts seriously worn	(1) Check and retighten (2) Check and clean away (3) Replace with thicker paper gasket (4) Repair or replace
Pressure insufficient or discharge capacity decreased	(1) Motor runs too slow (2) Air filter choked up (3) Leakage of safety valve (4) Leakage of discharge pipe (5) Sealing gasket damaged (6) Valve plate damaged, carbon build up or stuck (7) Piston ring and cylinder worn or damaged	(1) Check and remedy (2) Clean or replace the cartridge (3) Check and adjust (4) Check and repair (5) Check and replace (6) Replace and clean (7) Repair or replace

11. PARTS ILLUSTRATION



PARTS LIST

No.	Designation	Q'ty.	No.	Designation	Q'ty.
1	Bolt M8×100	4	25	Motor bracket	1
2	Cylinder head	1	26	Nut M8	1
3	Cylinder head gasket	1	27	Capacitor	1
4	Valve plate	1	28	Fan	1
5	Valve gasket	1	29	Circlip	1
6	Cylinder	1	30	Fan cover	1
7	Cylinder gasket	1	31	Circlip	2
8	Piston ring	3	32	Valve clack	1
9	Piston pin	1	33	Air filter	1
10	Piston	1	34	Connector	1
12	Breath pipe	1	35	Discharge pipe	1
13	Connecting rod	1	36	Release pipe	1
14	Rubber gasket	1	37	Pressure switch	1
15	Screw M5×14	6	38	Pressure gauge	1
16	Crank case cover	1	39	Outlet valve	2
17	Oil leveler	1	40	Switch bracket	1
18	Bolt M8×22	1	41	Check valve	1
19	Crank	1	42	Air tank	1
20	Crank case	1	43	Bolt M8×25	1

21	Motor	1	44	Washer foot	1
22	Sealing ring	1	45	Nut 8	1
23	Bearing 6204RS	1	46	Drain cock	1
24	Bearing6202RS	1	47	Wheel	2

12. LIST OF GOODS

№	Designation	amount
1	Air compressor	1
2	Air filter	1
3	Breath pipe	1
4	Rubber gasket	1
5	Operation manual	1

13.DECLARATION OF CONFORMITY

BUILDER SAS
ZI, 32 rue aristide Bergès – 31270 Cugnaux – France

Declares that the machinery designated below:

COMPRESSOR
H50CV-A

S/N : 2021050002858~ 2021050002907

Complies with the provisions of the Directive "machinery" 2006/42/EC and regulations
National transposing it;

Also complies with the following European directives:

EMC Directive 2014/30/EU

Directive LVD 2014/35/EU

RoHS Directive (EU)2015/863 amending 2011/65/EU

Noise emission Directive 2000/14/EC Annex VI and Directive 2005/88/EC
Notified Body 0036

TÜV SÜD Industrie Service GmbH • Westendstrasse 199 • 80686 München •
Deutschland

Also complies with European standards, national standards and provisions following
techniques:

EN ISO 12100:2010, EN 1012-1:2010,

EN 60204-1:2006+A1:2009+AC:2010,

EN 61000-6-1:2007,

EN 61000-6-3:2007+A1:2011+AC:2012,

EN 61000-3-2:2014, EN 61000-3-3:2013

Sound power level: 95.2dB(A),K=1.96dB(A)

Guaranteed sound power level: 97dB(A)

Cugnaux: 29/03/2021



Philippe MARIE/CEO

14. WARRANTY

HYUNDAI

WARRANTY

The manufacturer guarantees the product against defects in material and workmanship for a period of 2 years from the date of the original purchase. The warranty only applies if the product is for household use. The warranty does not cover breakdowns due to normal wear and tear.

The manufacturer agrees to replace parts identified as defective by the designated distributor. The manufacturer does not accept responsibility for the replacement of the machine, in whole or in part, and/or ensuing damage.

The warranty does not cover breakdowns due to:

- insufficient maintenance.
- abnormal assembly, adjustment or operations of the product.
- parts subject to normal wear and tear.

The warranty does not extend to:

- shipping and packaging costs.
- using the tool for a purpose other than that for which it was designed.
- the use and maintenance of the machine done in a manner not described in the user manual.

Due to our policy of continuous product improvement, we reserve the right to alter or change specifications without notice. Consequently, the product may be different from the information contained therein, but a modification will be undertaken without notice if it is recognized as an improvement of the preceding characteristic.

READ THE MANUAL CAREFULLY BEFORE USING THE MACHINE.

When ordering spare parts, please indicate the part number or code, you can find this in the spare parts list in this manual. Keep the purchase receipt; without it, the warranty is invalid. To help you with your product, we invite you to contact us by phone or via our website:

- **+33 (0)9.70.75.30.30**
- **<https://services.swap-europe.com/contact>**

You must create a "ticket" via the web platform.

- Register or create your account.
- Indicate the reference of the tool.
- Choose the subject of your request.
- Describe your problem.
- Attach these files: invoice or sales receipt, photo of the identification plate (serial number), photo of the part you need (for example: pins on the transformer plug which are broken).



15. PRODUCT FAILURE

WHAT TO DO IF MY MACHINE BREAKS DOWN?

If you bought your product in a store:

- a) Empty the fuel tank.
- b) Make sure that your machine is complete with all accessories supplied, and clean! If this is not the case, the repairer will refuse the machine.

Go to the store with the complete machine and with the receipt or invoice.

If you bought your product on a website:

- a) Empty the fuel tank.
- b) Make sure that your machine is complete with all accessories supplied, and clean! If this is not the case, the repairer will refuse the machine.
- c) Create a SWAP-Europe service ticket on the site: <https://services.swap-europe.com> When making the request on SWAP-Europe, you must attach the invoice and the photo of the nameplate (serial number).
- d) Contact the repair station to make sure it is available before dropping off the machine.

Go to the repair station with the complete machine packed, accompanied by the purchase invoice and the station support sheet downloadable after the service request is completed on the SWAP-Europe site

For machines with engine failure from manufacturers BRIGGS & STRATTON, HONDA and RATO, please refer to the following instructions.

Repairs will be done by approved engine manufacturers of these manufacturers, see their site:

- <http://www.briggsandstratton.com/eu/fr>
- <http://www.honda-engines-eu.com/fr/service-network-page;jsessionid=5EE8456CF39CD572AA2AEEDFD290CDAE>
- <https://www.rato-europe.com/it/service-network>

Please keep your original packaging to allow for after-sales service returns or pack your machine with a similar cardboard box of the same dimensions.

For any question concerning our after-sales service you can make a request on our website <https://services.swap-europe.com>

Our hotline remains available at +33 (9) 70 75 30 30.



16. WARRANTY EXCLUSIONS

THE WARRANTY DOES NOT COVER:

- Start-up and setting up of the product.
- Damage resulting from normal wear and tear of the product.
- Damage resulting from improper use of the product.
- Damage resulting from assembly or start-up not in accordance with the user manual.
- Breakdowns related to carburetion beyond 90 days and fouling of carburetors.
- Periodic and standard maintenance events.
- Actions of modification and dismantling that directly void the warranty.
- Products whose original authentication marking (brand, serial number) has been degraded, altered or withdrawn.
- Replacement of consumables.
- The use of non-original parts.
- Breakage of parts following impacts or projections.
- Accessories breakdowns.
- Defects and their consequences linked to any external cause.
- Loss of components and loss due to insufficient screwing.
- Cutting components and any damage related to the loosening of parts.
- Overload or overheating.
- Poor power supply quality: faulty voltage, voltage error, etc.
- Damages resulting from the deprivation of enjoyment of the product during the time necessary for repairs and more generally the costs related to the immobilization of the product.
- The costs of a second opinion established by a third party following an estimate by a SWAP-Europe repair station
- The use of a product which would show a defect or a breakage which was not the subject of an immediate report and/or repair with the services of SWAP-Europe.
- Deterioration linked to transport and storage*.
- Launchers beyond 90 days.
- Oil, petrol, grease.
- Damages related to the use of non-compliant fuels or lubricants.

* In accordance with transport legislation, damage related to transport must be declared to carriers within 48 hours maximum after observation by registered letter with acknowledgement of receipt.

This document is a supplement to your notice, a non-exhaustive list.

Attention: all orders must be checked in the presence of the delivery person. In case of refusal by the delivery person, it you must simply refuse the delivery and notify your refusal.

Reminder: the reserves do not exclude the notification by registered letter with acknowledgement within 72 hours.

Information:

Thermal devices must be wintered each season (service available on the SWAP-Europe site). Batteries must be charged before being stored.

HYUNDAI
POWER PRODUCTS

For Inquiries, please contact:

BUILDER SAS
32, Rue Aristide Bergès Z1 31270 Cugnaux, France
Tél.: +33(0)5.34.502.502 Fax : +33(0)5.34.502.503
<http://www.hyundaipower-fr.com/>
Fabriqué en République Populaire de Chine(PRC)